

# EXHIBIT BU

# Calmodulin mutations and life-threatening cardiac arrhythmias: insights from the International Calmodulinopathy Registry

Lia Crotti<sup>1,2,3,4,5\*</sup>, Carla Spazzolini<sup>1,5</sup>, David J. Tester<sup>6,7,8</sup>, Alice Ghidoni<sup>1,2,5</sup>, Alban-Elouen Baruteau<sup>5,9,10</sup>, Britt-Maria Beckmann<sup>11</sup>, Elijah R. Behr<sup>5,10</sup>, Jeffrey S. Bennett<sup>12</sup>, Connie R. Bezzina<sup>5,13</sup>, Zahurul A. Bhuiyan<sup>14</sup>, Alpay Celiker<sup>15</sup>, Marina Cerrone<sup>16</sup>, Federica Dagradi<sup>1,5</sup>, Gaetano M. De Ferrari<sup>17,18</sup>, Susan P. Etheridge<sup>19</sup>, Meena Fatah<sup>20</sup>, Pablo Garcia-Pavia<sup>5,21,22</sup>, Saleh Al-Ghamdi<sup>23</sup>, Robert M. Hamilton<sup>20</sup>, Zuhair N. Al-Hassnan<sup>24</sup>, Minoru Horie<sup>25</sup>, Juan Jimenez-Jaimez<sup>26</sup>, Ronald J. Kanter<sup>27</sup>, Juan P. Kaski<sup>5,28,29</sup>, Maria-Christina Kotta<sup>1,2,5</sup>, Najim Lahrouchi<sup>5,13</sup>, Naomasa Makita<sup>30</sup>, Gabrielle Norrish<sup>28,29</sup>, Hans H. Odland<sup>31</sup>, Seiko Ohno<sup>25,32</sup>, John Papagiannis<sup>33</sup>, Gianfranco Parati<sup>3,4</sup>, Nicole Sekarski<sup>34</sup>, Kristian Tveten<sup>35</sup>, Matteo Vatta<sup>36,37,38</sup>, Gregory Webster<sup>39</sup>, Arthur A.M. Wilde<sup>5,13</sup>, Julianne Wojciak<sup>40</sup>, Alfred L. George Jr<sup>41</sup>, Michael J. Ackerman<sup>6\*†</sup>, and Peter J. Schwartz<sup>1,2,5\*†</sup>

<sup>1</sup>Istituto Auxologico Italiano, IRCCS, Center for Cardiac Arrhythmias of Genetic Origin, Milan, Italy; <sup>2</sup>Istituto Auxologico Italiano, IRCCS, Laboratory of Cardiovascular Genetics, Milan, Italy; <sup>3</sup>Istituto Auxologico Italiano, IRCCS, Department of Cardiovascular, Neural and Metabolic Sciences, San Luca Hospital, Milan, Italy; <sup>4</sup>Department of Medicine and Surgery, University of Milano-Bicocca, Milan, Italy; <sup>5</sup>Member of the European Reference Network for Rare, Low Prevalence and Complex Diseases of the Heart—ERN GUARD-Heart; <sup>6</sup>Division of Heart Rhythm Services, Department of Cardiovascular Medicine, Mayo Clinic, Rochester, MN, USA; <sup>7</sup>Division of Pediatric Cardiology, Department of Pediatric and Adolescent Medicine, Mayo Clinic, Rochester, MN, USA; <sup>8</sup>Windland Smith Rice Sudden Death Genomics Laboratory, Department of Molecular Pharmacology & Experimental Therapeutics, Mayo Clinic, Rochester, MN, USA; <sup>9</sup>L'Institut du Thorax, INSERM, CNRS, UNIV Nantes, CHU Nantes, Nantes, France; <sup>10</sup>Cardiology Clinical Academic Group, Molecular and Clinical Sciences Research Institute, St George's University of London, London, UK; <sup>11</sup>Department of Medicine I, Klinikum Grosshadern, Ludwig-Maximilians University, Munich, Germany; <sup>12</sup>The Heart Center, Nationwide Children's Hospital, Columbus, OH, USA; <sup>13</sup>Amsterdam UMC, University of Amsterdam, Heart Center; Department of Clinical and Experimental Cardiology, Amsterdam Cardiovascular Sciences, Amsterdam, The Netherlands; <sup>14</sup>Unité de Recherche Cardiogénétique, Service de Médecine Génétique, Lausanne University Hospital (CHUV), Lausanne, Switzerland; <sup>15</sup>Department of Pediatric Cardiology, Koc University School of Medicine, Istanbul, Turkey; <sup>16</sup>Cardiovascular Genetics Program, Leon H. Charney Division of Cardiology, New York University School of Medicine, New York, NY, USA; <sup>17</sup>Division of Cardiology, "Città della Salute e della Scienza di Torino" Hospital, Department of Medical Sciences, University of Turin, Italy; <sup>18</sup>PhD Program in Translational Medicine, Department of Molecular Medicine, University of Pavia, Pavia, Italy; <sup>19</sup>Division of Pediatric Cardiology, Department of Pediatrics, University of Utah and Primary Children's Hospital, Salt Lake City, UT, USA; <sup>20</sup>The Labatt Family Heart Centre and Pediatrics (Cardiology), The Hospital for Sick Children and University of Toronto, Toronto, Ontario, Canada; <sup>21</sup>Inherited Cardiac Diseases Unit, Department of Cardiology, Hospital Universitario Puerta de Hierro, CIBERCV, Madrid, Spain; <sup>22</sup>University Francisco de Vitoria (UFV), Pozuelo de Alarcón, Spain; <sup>23</sup>Cardiac Sciences Department, Section of Pediatric Cardiology, King Abdulaziz Cardiac Center, Ministry of National Guard Health Affairs, Riyadh, Saudi Arabia; <sup>24</sup>Cardiovascular Genetic Program, Department of Medical Genetics, King Faisal Specialist Hospital and Research Centre, Riyadh, Saudi Arabia; <sup>25</sup>Department of Cardiovascular and Respiratory Medicine, Shiga University of Medical Science, Otsu, Japan; <sup>26</sup>Cardiology Department, Virgen de las Nieves University Hospital, Granada, Spain; <sup>27</sup>Nicklaus Children's Hospital Miami, Miami, FL, USA; <sup>28</sup>Centre for Inherited Cardiovascular Diseases, Great Ormond Street Hospital, London, UK; <sup>29</sup>Institute of Cardiovascular Science, University College London, London, UK; <sup>30</sup>National Cerebral and Cardiovascular Center, Research Institute and Omics Research Center, Osaka, Japan; <sup>31</sup>Department of Pediatric Cardiology, Oslo University Hospital, Rikshospitalet, Oslo, Norway; <sup>32</sup>Department of Bioscience and Genetics, National Cerebral and Cardiovascular Center, Osaka, Japan; <sup>33</sup>Division of Cardiology, Children's Mercy Hospital, Kansas City, MO, USA; <sup>34</sup>Paediatric Cardiology Unit, Lausanne University Hospital (CHUV), Lausanne, Switzerland; <sup>35</sup>Department of Medical Genetics, Telemark Hospital Trust, Skien, Norway; <sup>36</sup>Department of Medical and Molecular Genetics, Indiana University School of Medicine, Indianapolis, IN, USA; <sup>37</sup>Department of Medicine, Indiana University School of Medicine, Indianapolis, IN, USA; <sup>38</sup>Invitae Corporation, San Francisco, CA, USA; <sup>39</sup>Division of Cardiology, Ann and Robert H. Lurie Children's Hospital of Chicago, Northwestern University Feinberg School of Medicine, Chicago, IL, USA; <sup>40</sup>Department of Genomic Medicine, University of California San Francisco (UCSF), San Francisco, CA, USA; and <sup>41</sup>Department of Pharmacology, Northwestern University Feinberg School of Medicine, Chicago, IL, USA

Received 30 October 2018; revised 6 February 2019; editorial decision 17 April 2019; accepted 29 April 2019

\* Corresponding author. Tel: +39 02 55000408, Fax: +39 02 55000411, Email: peter.schwartz@unipv.it, p.schwartz@auxologico.it; Tel: +39 02 619112374, Fax: +39 02 619112956, Email: lcrotti@auxologico.it; Tel: +1 507 284 0101, Fax: +1 507 284 3757, Email: ackerman.michael@mayo.edu

†The last two authors are co-equal senior authors.

Published on behalf of the European Society of Cardiology. All rights reserved. © The Author(s) 2019. For permissions, please email: journals.permissions@oup.com.

## Aims

Calmodulinopathies are rare life-threatening arrhythmia syndromes which affect mostly young individuals and are caused by mutations in any of the three genes (*CALM 1–3*) that encode identical calmodulin proteins. We established the International Calmodulinopathy Registry (ICalmR) to understand the natural history, clinical features, and response to therapy of patients with a *CALM*-mediated arrhythmia syndrome.

## Methods and results

A dedicated Case Report File was created to collect demographic, clinical, and genetic information. ICalmR has enrolled 74 subjects, with a variant in the *CALM1* ( $n=36$ ), *CALM2* ( $n=23$ ), or *CALM3* ( $n=15$ ) genes. Sixty-four (86.5%) were symptomatic and the 10-year cumulative mortality was 27%. The two prevalent phenotypes are long QT syndrome (LQTS; *CALM*-LQTS,  $n=36$ , 49%) and catecholaminergic polymorphic ventricular tachycardia (CPVT; *CALM*-CPVT,  $n=21$ , 28%). *CALM*-LQTS patients have extremely prolonged QTc intervals ( $594 \pm 73$  ms), high prevalence (78%) of life-threatening arrhythmias with median age at onset of 1.5 years [interquartile range (IQR) 0.1–5.5 years] and poor response to therapies. Most electrocardiograms (ECGs) show late onset peaked T waves. All *CALM*-CPVT patients were symptomatic with median age of onset of 6.0 years (IQR 3.0–8.5 years). Basal ECG frequently shows prominent U waves. Other *CALM*-related phenotypes are idiopathic ventricular fibrillation (IVF,  $n=7$ ), sudden unexplained death (SUD,  $n=4$ ), overlapping features of CPVT/LQTS ( $n=3$ ), and predominant neurological phenotype ( $n=1$ ). Cardiac structural abnormalities and neurological features were present in 18 and 13 patients, respectively.

## Conclusion

Calmodulinopathies are largely characterized by adrenergically-induced life-threatening arrhythmias. Available therapies are disquietingly insufficient, especially in *CALM*-LQTS. Combination therapy with drugs, sympathectomy, and devices should be considered.

## Keywords

Calmodulin • Catecholaminergic polymorphic ventricular tachycardia • Idiopathic ventricular fibrillation • Long QT syndrome • Sudden death

## Introduction

A severe form of long QT syndrome (LQTS) with early occurrence of life-threatening arrhythmias caused by mutations in one of the three genes (*CALM 1–3*) encoding calmodulin (CaM) was first reported in 2013.<sup>1</sup> CaM is a ubiquitous, multifunctional  $\text{Ca}^{2+}$  binding protein. The clinical presentation was similar among the affected individuals, including a markedly prolonged QTc, episodes of T wave alternans, 2:1 functional atrioventricular block, cardiac arrest in the first year(s) of life, and need for an implantable cardioverter-defibrillator (ICD) despite optimal medical therapy. Since then, scattered reports on few patients and isolated families emerged.<sup>2–13</sup> The phenotype most frequently shown by patients with *CALM* mutations was LQTS,<sup>1,4–8,12</sup> but some had catecholaminergic polymorphic ventricular tachycardia (CPVT)<sup>2,10</sup> or idiopathic ventricular fibrillation (IVF).<sup>3</sup> *CALM* mutations were also identified in autopsy-negative sudden unexplained deaths (SUD) in young individuals.<sup>9</sup> Given the wide spectrum of the clinical manifestations associated to *CALM* mutations, the term ‘Calmodulinopathy’ was coined.<sup>14</sup>

Given the apparent rarity and lethality of the *CALM*-mediated arrhythmogenic diseases, with a heterogeneous genetic background and variable clinical phenotype, we thought that an international cooperative effort was the only feasible way to begin to understand the natural history, clinical features, and response to therapy of these patients. As done 40 years ago for LQTS,<sup>15–17</sup> we (L.C., P.J.S., and M.J.A.) established the International Calmodulinopathy Registry (ICalmR) and here we report the initial findings.

## Methods

### Subjects and ascertainment

The study population ( $n=74$ ) comes from two sources, the International Calmodulinopathy Registry (ICalmR) and the published literature. The ICalmR is a worldwide multicentre clinical observational Registry established in 2015 with the goal of recruiting patients with a pathogenic variant in the *CALM1*, *CALM2*, or *CALM3* genes regardless of the phenotype (LQTS, CPVT, IVF, other). To enroll patients, we have involved most of the centres and key investigators expert in arrhythmic diseases of genetic origin and having published the first description of *CALM*-LQTS patients, we have also been contacted by investigators who had encountered even a single case. Including the two co-ordinating centres (Istituto Auxologico Italiano IRCCS, Milan, Italy, and Mayo Clinic, Rochester, MN, USA), 22 centres from Europe, North America, and Asia have joined the Registry by contributing 58 (78%) genotyped patients with *CALM*-mediated arrhythmia syndromes. A dedicated Case Report File was created to collect demographic, clinical, and genetic information. The Ethics Committees of the co-ordinating and enrolling centres approved the study. The patient data were released in an anonymous form.

We used published literature as an additional source of 16 cases (22%), for whom high quality clinical and genetic details were available. In total, here, we report data on 74 patients with a calmodulinopathy.

### Genetic characterization

The pathogenic/likely pathogenic *CALM* variants included in the Registry were identified through whole exome sequencing (WES), targeted next-generation sequencing (NGS), or Sanger sequencing, in 51%, 29%, and 20% of the index patients, respectively. None of the patients enrolled had additional clinically relevant pathogenic variants in other arrhythmia-susceptibility genes.

The nomenclature of the reported genetic variants conforms to the latest Human Genome Variation Society guidelines.<sup>18</sup> We specifically numbered amino acid positions based on assignment of the initiating methionine start codon as position 1. The *CALM* acronym refers to any of the three calmodulin genes, while the CaM acronym refers to the calmodulin protein. Variant classifications were made according to the American College of Medical Genetics Guidelines (ACMG).<sup>19</sup> Genetic variants were specifically analysed focusing on: presence or absence in publicly available exome/genome databases (1000 Genomes, Exome Variant Server, ExAC, gnomAD),<sup>20–22</sup> amino acid conservation across species (in 100 vertebrates), protein domain affected by the amino acid change, previous literature description and functional characterization.

## Phenotype characterization

The data of each enrolled patient included demographics, personal and family histories, foetal-perinatal period information, comorbidities, electrocardiogram (ECG) parameters, individual phenotypic features, cardiac events information, therapies. Based on phenotype and clinical judgement, the patients were classified with one of the following major conditions: LQTS,<sup>23</sup> CPVT,<sup>24</sup> IVF,<sup>24</sup> overlap between LQTS/CPVT, and SUD in young individuals. LQTS and CPVT were the two most prevalent subgroups, henceforth referred to as *CALM*-LQTS and *CALM*-CPVT. Idiopathic ventricular fibrillation is defined as a resuscitated cardiac arrest victim, preferably with documentation of ventricular fibrillation (VF), in whom known cardiac, respiratory, metabolic and toxicological aetiologies have been excluded through clinical evaluation.<sup>23</sup> SUD is defined as a natural, unexpected fatal event occurring within 1 h from the onset of symptoms in an apparently healthy subject, with no known familial disease. In all SUD cases, an autopsy was performed and obvious causes were excluded; no ECG was available in these cases, and only molecular autopsy allowed the diagnosis of calmodulinopathy.

Subjects were considered symptomatic if they suffered at least one cardiac event, such as syncope (fainting spell with transient, but complete, loss of consciousness), aborted cardiac arrest (ACA) requiring resuscitation, or sudden cardiac death (SCD) occurring before age 20. Seven first-degree relatives of three probands who died before diagnosis, in the absence of genetic testing, were assumed to be positive for the same *CALM* variant identified in their family and were consequently included. One patient, with marked neonatal sinus bradycardia and a cardiogenic shock soon after birth, was considered as symptomatic. Appropriate ICD discharges for ventricular tachycardia (VT)/VF were counted and considered together with ACA and SCD as major arrhythmic events (MAEs). A perinatal presentation was defined as the occurrence of symptoms in the period ranging from approximately the 28th week of gestation to the 28th day after birth.

## Statistical analysis

Continuous data are presented as mean and standard deviation or as median and interquartile range (IQR, 25th–75th percentile), and analysed with the Student's *t*-test or with the Mann–Whitney test. Categorical variables were presented as absolute (*n*) and relative frequencies (%), and compared among phenotype groups with the Fisher's exact test or  $\chi^2$  test as appropriate. Event-free survival is described by Kaplan–Meier cumulative estimates, with the comparison between subgroups performed by the log-rank test. Two-sided *P*-values <0.05 were considered statistically significant. SPSS Statistics version 23 (IBM Co, Armonk, NY, USA) was used for computation.

## Results

### Registry population

The ICalmR has enrolled 74 subjects with a pathogenic or likely pathogenic variant in either *CALM1*, *CALM2*, or *CALM3* from 51 different families.

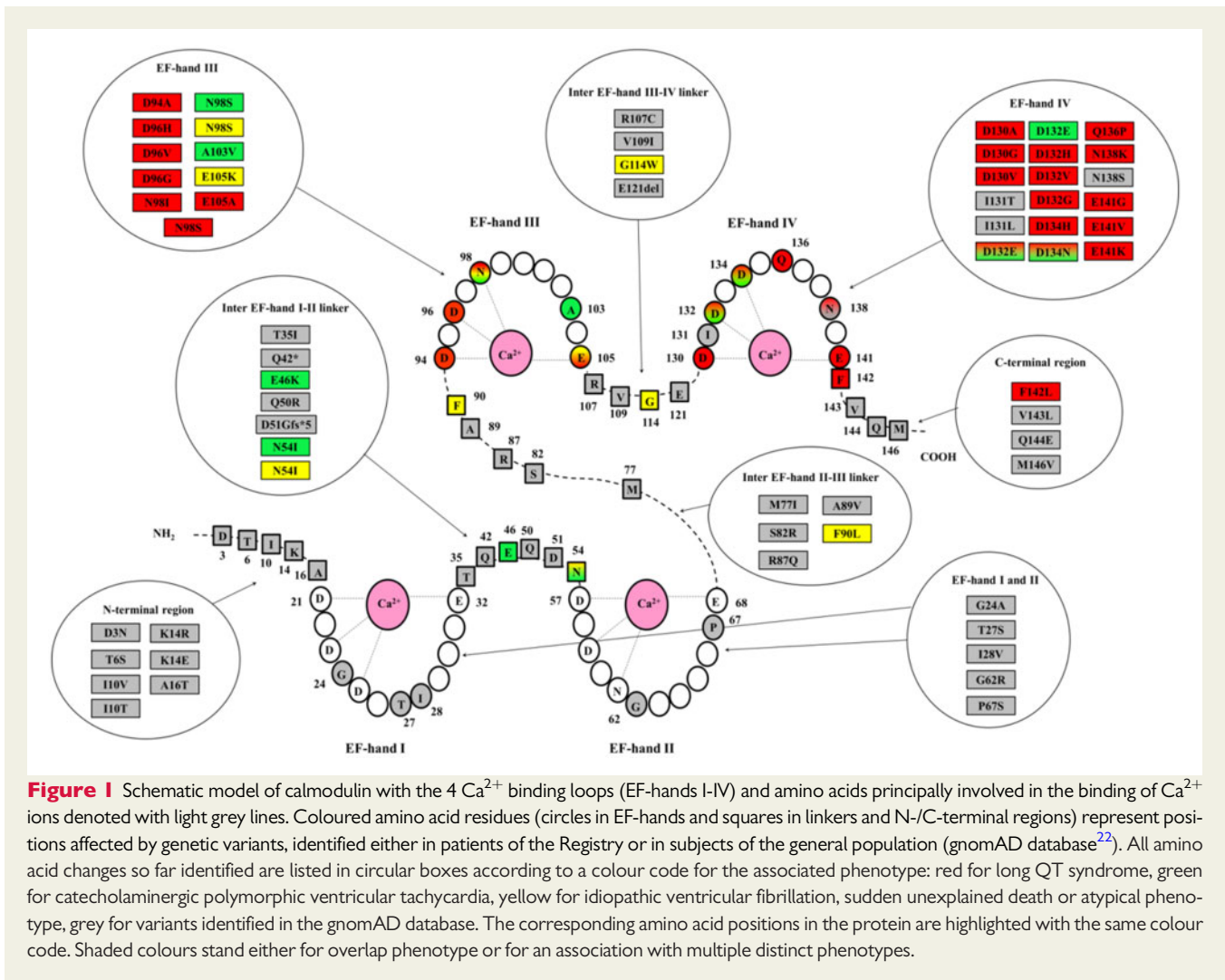
### Genetic features

Thirty-five single nucleotide substitutions leading to 28 distinct amino acid changes were identified in the 74 *CALM*-positive patients (36 *CALM1*, 23 *CALM2*, and 15 *CALM3* patients) included in the Registry. Among these 35 variants, 11 (31%) were in *CALM1*, 16 (46%) in *CALM2*, and 8 (23%) in *CALM3*. These genetic variants are schematically depicted in *Figure 1* and summarized in [Supplementary material online, Table S1](#). They constitute a homogeneous group of missense variants with recurrent and similar features. Specifically, amino acid changes always involved highly conserved residues (degree of conservation among 100 vertebrates  $\geq 99\%$ ), all were classified as pathogenic/likely pathogenic<sup>19</sup> and none were present in publicly available exome/genome databases including more than 140 000 individuals (accessed September 2018).<sup>20–22</sup>

The majority of variants affected amino acid residues in the EF-hand Ca<sup>2+</sup> binding loop III and IV [28/35 nucleotide substitutions (80%)], and most of them affected one of the four amino acid residues principally involved in Ca<sup>2+</sup> binding (Asp, Asp, Asp/Asn, and Glu, at positions 1, 3, 5, and 12, respectively, from the beginning of each 12-residue loop) [25/28 nucleotide substitutions (89%)]. Interestingly, while most of the variants were unique by type and gene location, nine were present in more than one index case and among these, three (p.Asn98Ser, p.Asp130Gly, and p.Phe142Leu) appeared to be relative hot-spots, identified in 10, 5, and 4 families, respectively. Of note, while p.Asp130Gly and p.Phe142Leu were always associated with the LQTS phenotype, the p.Asn98Ser had phenotypic variability, including LQTS, CPVT, IVF, and SUD. Despite the relatively small numbers of cases, a significant association (*P* = 0.001) was observed between location of mutation and phenotype ([Supplementary material online, Figure S1](#)). Indeed, a pathogenic variant in EF-hand IV Ca<sup>2+</sup> binding loop was found in the majority (17/32, 53%) of *CALM*-LQTS index cases but in only one of the nine *CALM*-CPVTs (11%). Conversely, variants identified in *CALM*-CPVT index cases were mostly located either in EF-hand III (*n* = 5, 56%), or in the inter-EF hand I-II linker (*n* = 3, 33%).

In 27/29 (93%) *CALM*-LQTS and in 7/9 *CALM*-CPVT (78%) patients whose family members were genetically screened, the culprit variant was *de novo*. In the remaining two *CALM*-LQTS cases and in one IVF case, germline mosaicism was present in one of the parents.

Interrogation of the gnomAD database<sup>22</sup> (September 2018) for variants in the three main transcripts of the calmodulin genes revealed a much lower than expected number of missense and loss-of-function variants, indicating that the *CALM* genes are intolerant to such variations, while they result more tolerant to synonymous variation, as indicated by the relative constraint metrics (i.e. statistics based on observed/expected variant comparisons). Among the exonic non-synonymous variants reported in the gnomAD datasets (*n* = 29),<sup>22</sup> 21 were located outside the EF-hand loops, and none of the remaining 8 involved the principal Ca<sup>2+</sup> binding residues.



Therefore, the presence of genetic variants within the EF-hand  $\text{Ca}^{2+}$  binding loops differs significantly between index cases of the Registry and the general population (80% vs. 28%,  $P < 0.0001$ ). The different location of variants in our cases and in the general population is shown in Figure 1.

### General clinical features

The clinical characteristics of the study population [51% males, median age 9.0 years (IQR 4.5-15.0)] are summarized in Table 1. The ethnic-geographic background was heterogeneous with 55% of subjects having European ancestry. Most patients ( $n = 64$ , 86.5%) were symptomatic and, by age 5, 50% had already experienced an arrhythmic event (Figure 2A). Males had a significantly higher probability of becoming symptomatic than females ( $P = 0.02$ ; Figure 2B). Triggers of cardiac events were adrenergic stimuli in 81% of patients, irrespective of the phenotype and mostly (62%) associated with exertion. Major arrhythmic events (ACA, SCD/SUD, ICD appropriate discharges) occurred in 50 (68%) subjects at a median age at first event of 5.0 years (IQR 2.0-10.0). Twenty (27%) had SCD at a mean age of  $5.7 \pm 4.6$  years [median 4.8, IQR (1.6-9.8)]. As shown in Figure 2C, the

2-, 5-, and 10-year cumulative survival was 88%, 84%, and 73%, respectively. Three children with CALM-LQTS diagnosed in the neonatal period died a non-arrhythmic death, at 8 days, 6 months, and 5 years, due to ICD implant complications, heart failure and infection post-cardiac surgery, and hypoglycaemia, respectively.

The two most prevalent phenotypes were LQTS ( $n = 36$ ) and CPVT ( $n = 21$ ), observed in 77% of the entire study population (Table 2).

### CALM-LQTS

The thirty-six CALM-LQTS patients (49% of total cohort) exhibited an extremely prolonged mean QTc ( $594 \pm 73$  ms) and a high prevalence (78%) of life-threatening arrhythmias occurring very early in life. There were 10 SCD, mostly before age 3. In addition to the marked QT interval prolongation, a typical repolarization morphology, characterized by a late onset peaked T wave, was observed in 19/23 (83%) CALM-LQTS patients. This ECG pattern resembles that of LQT3 and Timothy Syndrome (Supplementary material online, Figure S2). However, at variance with LQT3,<sup>25</sup> only in one of the six CALM-LQTS cases acute oral mexiletine significantly shortened QTc.

**Table 1** International Calmodulinopathy Registry

Demographic and clinical characteristics	
Patients, <i>n</i>	74
Families, <i>n</i>	51
Males, <i>n</i> (%)	38 (51)
Age at last follow-up (years), median (IQR)	9.0 (4.5–15.0)
Population/Ethnicity, <i>n</i> (%) <sup>a</sup>	
European/European American	40 (55)
Latino	3 (4)
East Asian (Japan)	8 (11)
South Asian (India)	4 (5)
African/African American	2 (3)
Others	16 (22)
Symptomatic, <i>n</i> (%)	
Any cardiac event	64 (86.5)
MAE <sup>b</sup>	50 (68)
SUD/SCD	20 (27)
Age at first event (years), median (IQR)	4.0 (1.5–8.0)
Any treatment prescribed ( <i>n</i> = 69)	
No therapy	13 (19)
β-blockers, <i>n</i> (%)	54 (78)
Sodium channel blockers, <i>n</i> (%)	21 (30)
Other antiarrhythmic drugs (verapamil, nicorandil)	4 (6)
LCSD/RCSL, <sup>c</sup> <i>n</i> (%)	4 (6)
Implantable devices	32 (46)
Pacemaker, <i>n</i> (%)	7 (10)
ICD, <i>n</i> (%)	25 (36)
Events on therapy ( <i>n</i> = 54 with known data)	29 (54)
Appropriate ICD discharges, <i>n</i> (%)	16 (30)
SCD, <i>n</i> (%)	8 (15)

<sup>a</sup>Patients' ethnicity was presented according to the population subgroups proposed in ExAC/gnomAD databases.<sup>22</sup> For one patient, ethnicity was not reported.

<sup>b</sup>ACA, SUD/SCD, VF detected/treated by ICD.

<sup>c</sup>One patient underwent both procedures, the remaining three only LCSD.

The onset of spontaneous major arrhythmias was recorded only in seven cases: it was always an abrupt onset of VF, while a pause-dependent TdP was never observed (Figure 3C). In 58% of CALM-LQTS patients there was a perinatal presentation, consisting in a variable combination of striking QT prolongation (QTc 628 ± 62 ms), sinus bradycardia, 2:1 atrioventricular block (Figure 3A), T wave alternans<sup>25</sup> (Figure 3B), and/or MAEs (Figure 3C). This early onset was almost exclusive of the LQTS phenotype (91%) (Supplementary material online, Table S2). Among CALM-LQTS patients, 13 (41%) also had cardiac structural abnormalities (Table 2, Supplementary material online, Table S3).

### CALM-CPVT

All 21 CALM-CPVT patients (13 from a single large family) were symptomatic for adrenergically-induced cardiac events (10 with MAEs) starting in childhood, with CPVT-like features of stress test-induced ventricular ectopies, ranging from isolated premature ventricular contractions to non-sustained ventricular tachycardia and

VT/VF (Supplementary material online, Figure S3). Ectopic beats were most often reported as polymorphic and rarely and inconsistently as truly bidirectional. Only one patient showed perinatal onset with severe foetal bradycardia ≤90 b.p.m. at 28 weeks gestational age (Supplementary material online, Table S2). In comparison with CALM-LQTS, CALM-CPVT patients were older at onset (median age 6 vs. 1.5 years, *P* = 0.005) and had fewer MAEs (48% vs. 78%, *P* = 0.04), with sudden death occurring in 14% of them (Table 2). Two unrelated subjects, with the same CALM mutation, had a patent ductus arteriosus as associated cardiac abnormality (Supplementary material online, Table S3). In six of the eight available baseline ECGs, a prominent U wave was observed in few precordial leads, with a repolarization pattern similar to what observed in Andersen-Tawil Syndrome<sup>26</sup> (Supplementary material online, Figure S4).

### Other phenotypes

The other phenotypes observed in association to CALM mutations were IVF (*n* = 7), SUD (*n* = 4), overlap CPVT/LQTS (*n* = 3), and an atypical cardio-neurological phenotype (*n* = 1). Only two subjects, part of an IVF family, remain completely asymptomatic at age 14 and 60, and with a normal ECG. SUD, IVF (Supplementary material online, Figure S5), and overlapping phenotypes frequently show adrenergically-induced ventricular arrhythmias and cardiac events. One patient, with a borderline QTc and peaked T waves, had recurrent neurologically-mediated seizures since age 3; cardiac events concomitant with seizures were excluded by an implantable loop recorder (ILR).

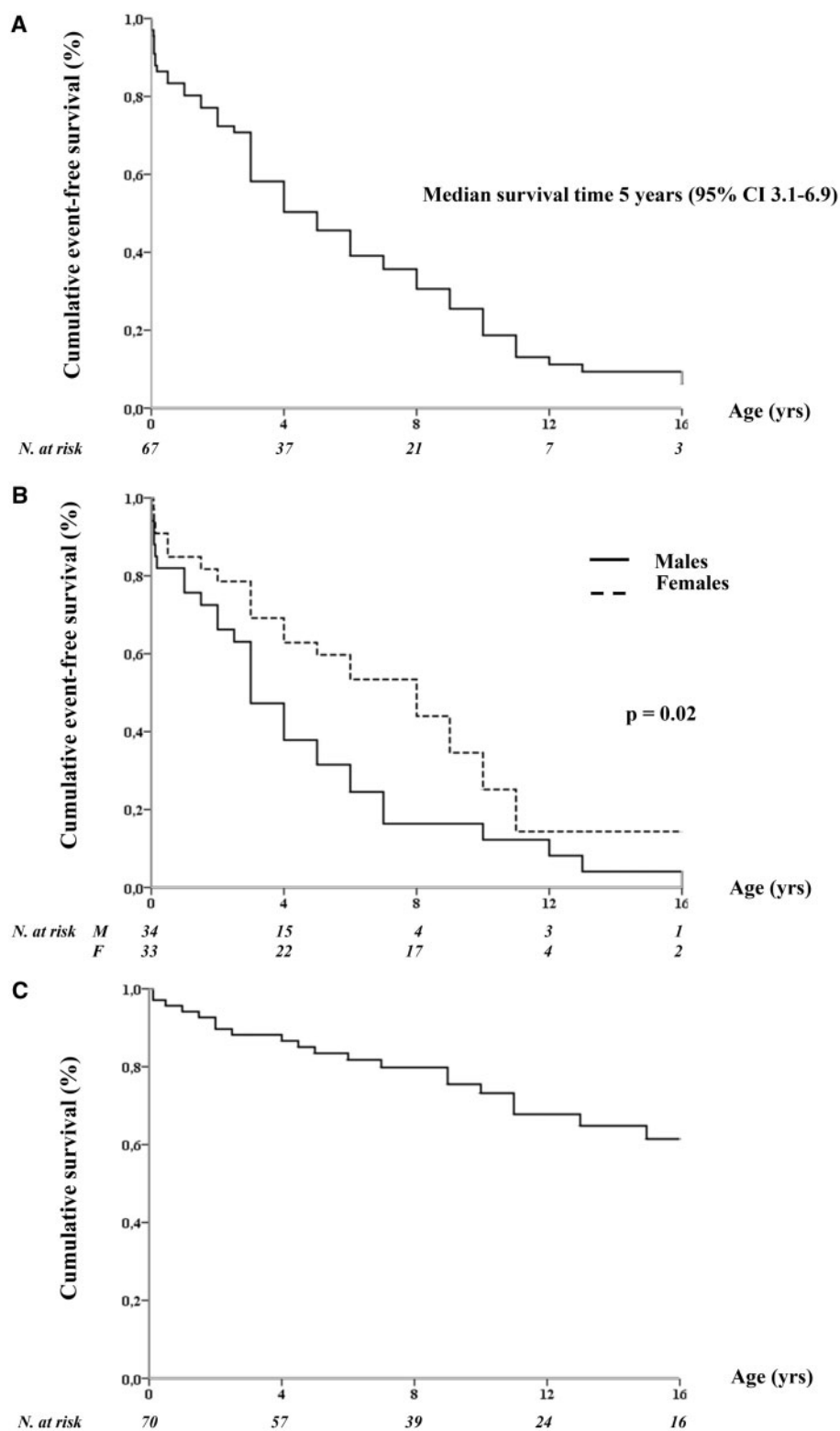
### Neurological features in CALM-positive subjects

For 13 subjects, most with an LQTS phenotype (*n* = 10) and a CALM1 mutation (*n* = 9), a mild-to-severe neurological impairment was reported, including seizures, development delay, motor and/or cognitive disability. In seven young patients, the neurologic deficits were observed following ACA, and therefore, these deficits are likely post-anoxic sequelae; six of them improved gradually during follow-up. In the six remaining patients, neurological features were unrelated to cardiac arrests and ranged from mental retardation and developmental delay to recurrent seizures and autism.

### Treatment and outcome

Data on therapy were known for 69 of the 74 patients (Table 1); for five patients that originated from published literature, precise information on therapy was unavailable and could not be retrieved. Thirteen were never treated, 54 (78%) were treated with β-blockers, 21 (30%) with a sodium channel blocker (mexiletine, flecainide, or ranolazine), 3 patients received verapamil, 1 nicorandil, and 4 (6%) underwent left cardiac sympathetic denervation (LCSD). In addition to 2 ILRs, 32 patients (46%) received a therapeutic device [(pacemaker, PM, *n* = 7), ICD (*n* = 25)] with a median age at first implant of 2 year (IQR 0–9.5).

In the two larger phenotypic groups (CALM-LQTS and CALM-CPVT), therapeutic attempts largely met with failure, as suggested by a global 56% prevalence of patients with cardiac events recurring despite β-blockers, sodium channel blockers, other antiarrhythmics, and LCSD. All these patients (*n* = 45) with available data on treatment received β-blockers, either alone (*n* = 15) or in combination with other therapies (*n* = 30), either as concomitant or subsequent therapeutic



**Figure 2** Event-free survival (to any first event) in the entire study population (A) and according to gender (B); cumulative survival (to sudden cardiac death) in the entire study population (C).

**Table 2** Clinical and genetic characteristics of the two most prevalent CaM-associated phenotypes

	CALM-LQTS	CALM-CPVT	P-value
Patients, <i>n</i>	36	21	
European, <i>n</i> (%)	16 (46)	16 (76)	0.03
Proband, <i>n</i> (%)	32 (89)	9 (43)	<0.001
Males, <i>n</i> (%)	21 (58)	11 (52)	0.78
QTc (ms), mean ± SD	594 ± 73	422 ± 35	<0.001
Symptoms, <i>n</i> (%)	29 (81)	21 (100)	0.04
MAE, <i>n</i> (%)	28 (78); 10 SCD	10 (48); 3 SCD	0.04
Median age at onset (years), median (IQR)	1.5 (0.1–5.5)	6.0 (3.0–8.5)	0.005
Perinatal presentation, <i>n</i> (%)	21 (58)	1 (5)	<0.001
Structural cardiac comorbidities, <i>n</i> (%)	13/32 (41)	3/20 (15)	0.07
Treatment, <i>n</i> <sup>a</sup>	31	14	
β-blockers	31 (100)	14 (100)	
Sodium channel blockers	16 (52)	3 (21)	0.10
Cardiac sympathetic denervation	3 (10)	1 (7)	1
Implanted devices, <i>n</i> (%)	22 (71) 15 ICD; 7 PM	4 ICD (29)	0.01
Events on therapy	20 (65)	5 (36)	0.11
Median follow-up on therapy (years), median (IQR)	5 (2–10)	7 (6–20)	0.07
SCD	7 (22)	1 (7)	0.40
ICD shocks	10 (32)	3 (21)	0.72
Genetics, <i>n</i> <sup>b</sup>	32	9	
Variants in CALM 1/2/3 gene, <i>n</i> (%)	11/14/7 (34/44/22)	4/3/2 (44/33/22)	0.83
Inter-EF hand I-II linker, <i>n</i> (%)	0	3(33)	0.001
EF-hand III, <i>n</i> (%)	11 (34)	5 (56)	
EF-hand IV, <i>n</i> (%)	17 (53)	1 (11)	
C-terminal region, <i>n</i> (%)	4 (13)	0	
De novo variant, <i>n</i> (%)	27/29 (93) <sup>c</sup>	7 (78)	0.23

<sup>a</sup>Number of patients with data on therapy and outcome.

<sup>b</sup>For genetic issues, data presentation refers to the number of family-based mutations, not of patients.

<sup>c</sup>Undetermined in three patients (adopted child, one, or both parents unavailable for genetic testing).

attempts (Table 2). Over a median 5-year follow-up on therapy, at least one breakthrough event occurred in 25 (20 CALM-LQTS, 5 CALM-CPVT) of these 45 patients (56%), including eight SCD (seven in CALM-LQTS.) Four subjects underwent LCSD, followed once by right cardiac sympathetic denervation; arrhythmias recurred in all three CALM-LQTS patients undergoing denervation surgery and with an adequate follow-up; however, they are all still alive. Twelve of the 26 patients with a device (7 PM, 19 ICD) were implanted in the first year of life (Table 2). During a median post-ICD observation time of 5 (IQR 3–9) years, 10 CALM-LQTS and 3 CALM-CPVT patients received at least one appropriate ICD shock (range 1–14 shocks). The effect of mexiletine could be assessed in 11 CALM-LQTS patients, and among them arrhythmia suppression was reported in 4 (36%). The only CALM-CPVT patient who received mexiletine together with β-blockers became asymptomatic. Verapamil was used in three patients but was discontinued in two because of VF recurrences (*n* = 1) or intolerance (*n* = 1).

## Discussion

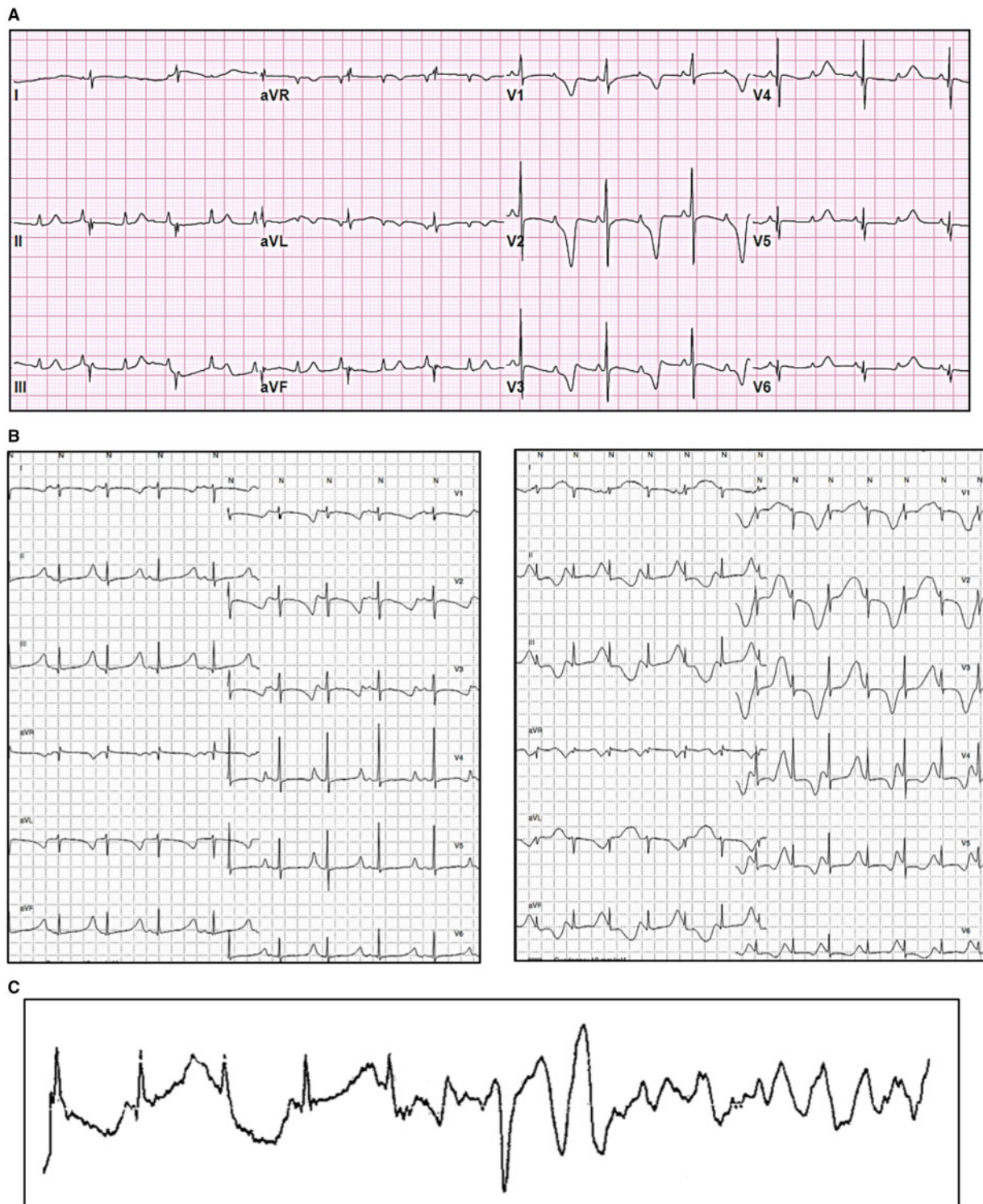
The present report provides the first comprehensive assessment of what is currently known regarding the clinical manifestations of

pathogenic and likely pathogenic variants in the genes encoding calmodulin. Only very recently has it become evident that genetic perturbations in CALM1, CALM2 and CALM3 are associated with the occurrence of life-threatening cardiac arrhythmias during infancy or early in childhood.<sup>1</sup> The availability of a mere handful of anecdotal reports of what are now referred to as calmodulinopathies has limited the understanding of the natural history, clinical diagnostic features, and clues for effective management of this rare and quite severe syndrome.

As it was done 40 years ago for LQTS,<sup>15–17</sup> the creation of an International Calmodulinopathy Registry including most cases of this rare but potentially lethal syndrome appeared the best way to address these pressing clinical questions and to provide the critical mass of data needed to draw meaningful conclusions. This was accomplished by establishing the International Calmodulinopathy Registry. Here, we report the first findings and discuss their implications.

Calmodulin is a ubiquitously expressed protein. In the heart, CaM is a critical modulator of several ion channels such as the L-type calcium channel, the sodium channel, different potassium channels, and the ryanodine receptor.<sup>27</sup> Unique to biology, and underscoring its importance, the entire amino acid identity of the CaM protein is derived from the transcription/translation of three distinct CALM genes





**Figure 3** Representative electrocardiograms of *CALM*-LQTS patients. (A) *CALM3*-D130G, male, 4 days, 12-lead electrocardiogram showing markedly prolonged QTc and 2:1 atrioventricular block. (B) *CALM 1*-D130G, female, 2 years, Holter recording showing markedly prolonged QTc and phases of T wave alternans. (C) Holter electrocardiogram showing the ventricular fibrillation onset in a *CALM1*-D130G, female, 9 months.

# INTERNATIONAL CALMODULINOPATHY REGISTRY

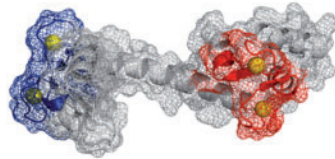
74 patients

## Genetics

*CALM1* gene (n=36)    *CALM2* gene (n=23)    *CALM3* gene (n=15)

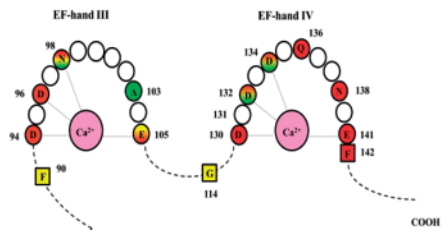
↓                      ↓                      ↓

CaM protein



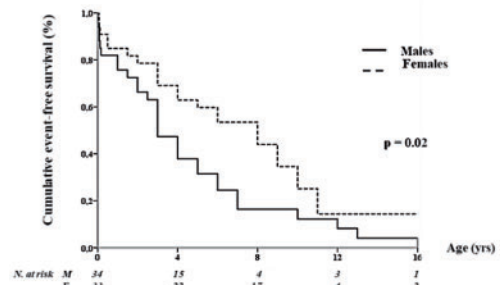
*De novo* mutations in 93% of CALM-LQTS and 78% of CALM-CPVT patients

Mutations mostly located in EF-hands III and IV (80%)



## Clinical hallmarks

- Extremely rare and severe
- Median age at first cardiac event 4 years
- Trigger for arrhythmic events: adrenergic stimuli in 81% of patients
- Major arrhythmic events in 68% of patients
- Sudden cardiac death in 27%



## PREVALENT PHENOTYPES

### *CALM*-LQTS (49%)

- Mean QTc 594±73 ms
- Late onset peaked T-waves
- Perinatal presentation in 58%
- Median age of onset 1.5 years
- Life-threatening arrhythmias in 78%

### *CALM*-CPVT (28%)

- All symptomatic for cardiac events
- 48% with major arrhythmic events
- Median age of onset 6.0 years

**Take home figure** Clinical hallmarks and major genetic findings in patients enrolled in the International Calmodulinopathy Registry.

residing on three different chromosomes. In addition, the CaM protein sequence is extraordinarily conserved across vertebrates and highly across all eukaryotes.<sup>28</sup> Only recently pathogenic variants involving these three calmodulin genes (*CALM1*, *CALM2*, and *CALM3*), have been identified and associated to severe forms of LQTS,<sup>1</sup> CPVT,<sup>2</sup> IVF,<sup>3</sup> and SUD.<sup>9</sup>

## Distinct clinical features of calmodulinopathy

Long QT syndrome is the most common and most malignant arrhythmogenic phenotype associated to disease-causative variants in the *CALM* genes. In 58% of the cases, a perinatal presentation with a mean QTc >600 ms, 2:1 functional atrioventricular block, T-wave alternans,<sup>25</sup> and/or MAEs was observed. These were all heterozygous missense variants, mainly *de novo*, which is not surprising given their malignancy; much less frequently they were inherited from an unaffected parent with germline mosaicism. LQTS-associated mutations were most often located in calcium binding sites at EF-hands III and IV, with a few recurrent variants (p. Asn98Ser, p. Asp130Gly, and p. Phe142Leu).

The clinical manifestations were strikingly similar independently of the ethnicities represented in our cohort. The functional effect of these CaM perturbations is probably so strong to override any influence on the phenotype by the genetic background. In addition to the severe phenotype and the early occurrence of clinical manifestations, *CALM*-LQTS had some specific features. The trigger of cardiac events was mainly adrenergic stimulation, and when the onset of the arrhythmias was recorded, a rapid VT, not preceded by a pause and quickly degenerating into ventricular fibrillation, was observed.

A distinctive feature of *CALM*-LQTS was an ECG pattern characterized by a late onset peaked T wave, resembling the ECG features observed in Timothy Syndrome and in LQT3. However, at variance with LQT3,<sup>24</sup> mexiletine did not shorten the QTc in most calmodulin cases despite reducing arrhythmic events in almost 40% of the patients. There were some similarities between *CALM*-LQTS and Timothy Syndrome (TS), the other calcium-related variant of LQTS,<sup>29</sup> such as the presence of cardiac structural abnormalities and/or neurological features and hypoglycaemia as a possible cause of death.<sup>30</sup>

Catecholaminergic polymorphic ventricular tachycardia is the second most represented calmodulinopathy phenotype. Here too, the disease-causative variants were heterozygous missense variants, occurring in any of the three *CALM* genes. At variance with *CALM*-LQTS, there were true familial cases of *CALM*-CPVT, although the majority of the probands (7/9, 78%) had *de novo* mutations. Symptoms were present in all affected subjects; however, compared with the LQTS phenotype, the clinical manifestations were somewhat less severe, with rare perinatal presentation and with fewer structural cardiac and neurological abnormalities. The baseline ECG is either completely normal or shows prominent U waves. In most cases, the clinical manifestations were not completely typical of CPVT. Indeed, exercise and adrenergic stimulation induced ventricular ectopic beats, also polymorphic, but sometimes only isolated; bi-directional VTs was seldom reported.

Eighteen patients (27%) showed co-existing cardiac structural abnormalities, mostly represented by atrial and ventricular septal

defects. As these are the most common congenital cardiac malformations, it is likely that early detection occurred as a result of the extensive diagnostic evaluation performed in these very young patients with a severe clinical phenotype. However, the prevalence of these cardiac malformations in calmodulinopathy is apparently not trivial, compared with their general prevalence of approximately 1% of live births.<sup>31</sup> These observations, along with the reported neurological and neurodevelopmental deficits, either subsequent or independent of prior cardiac arrest, raise the possibility that calmodulinopathy could be syndromic in a number of cases.

## From genotype to phenotype

Among the 25 distinct missense variants identified, 11 have been functionally characterized in different cellular settings (heterologous expression systems, mammalian ventricular myocytes, cardiomyocytes differentiated from human induced pluripotent stem cells, hiPSC-CMs) and are summarized in [Supplementary material online, Table S4](#). In our original description of *CALM*-LQTS,<sup>1</sup> we provided evidence that CaM mutations exhibited reduced Ca<sup>2+</sup>-binding affinity and impaired Ca<sup>2+</sup>-mediated signal transduction. Reduced Ca<sup>2+</sup>-binding capacity was demonstrated for other LQTS-related CaM mutations.<sup>4,6</sup> The mechanism by which this leads to prolongation of action potential duration is an impairment of Ca<sup>2+</sup>-dependent inactivation (CDI) of the L-type Ca<sup>2+</sup> channel Ca<sub>v</sub>1.2,<sup>6,32</sup> while the other ion channels regulated by CaM are less consistently affected.

Most functional studies thus far performed, attempted to assess CaM mutation effects in heterologous expression systems or mammalian cardiomyocytes. Although these experiments contributed to delineating the underlying calmodulinopathy mechanism, their results were significantly limited by not having employed a physiologically reliable experimental platform accounting for the native stoichiometric ratio of CaM. Since CaM is encoded by three different genes, i.e. six alleles, a single mutation of one allele implies that mutant CaM and wild-type CaMs co-exist in the cell in a 1:5 ratio.

To overcome this issue and to provide a deeper understanding of the effects conferred by CaM mutations in their native CM environment, we generated patient-specific induced pluripotent stem cells (iPSC) from skin fibroblasts of one of our patients with *CALM*-LQTS (p. Phe142Leu in *CALM1*)<sup>1</sup> and differentiated them into CMs<sup>33</sup> (iPSC-CMs). By performing extracellular field potential, membrane action potential, and intracellular Ca<sup>2+</sup> measurements, we demonstrated a strong dominant-negative reduction in the CDI of Ca<sub>v</sub>1.2, resulting in increased inward I<sub>CaL</sub> and repolarization delay as the variant's predominant effect.<sup>33</sup> Similar results were obtained by two other independent studies using an iPSC-CM platform for calmodulinopathy modelling.<sup>34,35</sup>

Catecholaminergic polymorphic ventricular tachycardia-associated disease-causative *CALM* variants have been studied less extensively and never in the context of patient-derived iPSC-CMs; however, the major *in vitro* effect of these variants is a higher binding affinity for RyR2 producing a greater RyR2 channel open probability with spontaneous formation of Ca<sup>2+</sup> waves.<sup>10,32,36,37</sup>

Overall, these studies have provided insights into the pathophysiological mechanisms underlying life-threatening arrhythmias in the context of calmodulinopathy.

At this time, it is evident that no gene-specific phenotypic correlations can be made since mutations in all three *CALM* genes may give

rise to different phenotypes. On the other hand, a few mutation-specific phenotypic correlations seem to emerge, such as the p.Asp130Gly and p.Phe142Leu mutations always associated with an LQTS phenotype. Another emerging correlation is that of mutation topology and phenotype. In fact, *CALM*-LQTS mutations seem to mainly affect amino acids residing in the Ca<sup>2+</sup> binding loops (EF-hands III and IV). Functional characterization of several LQTS-associated CaM mutations has indeed shown that they mostly affect CaM's Ca<sup>2+</sup> binding affinity, with a consequent impairment of the Ca<sup>2+</sup>-dependent inactivation of the Ca<sup>2+</sup> channel.<sup>32–35,37–39</sup> This is an established calmodulinopathy mechanism and is in accordance with the fact that the most frequently encountered phenotype across all mutations in all three genes is LQTS.

Conversely, CPVT-associated CaM mutations only occasionally involve amino acids directly responsible of Ca<sup>2+</sup> binding. Their few functional studies suggest that they strengthen CaM's affinity for the RyR2 channel, promoting its open conformation and increasing the frequency of Ca<sup>2+</sup> waves.

The p.Asn98Ser variant, associated with both a CPVT and LQTS phenotype, has shown multiple effects *in vitro* as it leads to greater RyR2 single-channel open probability<sup>36</sup> as well as to impaired CDI,<sup>34,37</sup> which fits with the two phenotypes observed *in vivo*. As with other arrhythmogenic diseases of genetic origin, only detailed functional studies on a case-by-case basis may explain how each specific mutation may give rise to more than one phenotype.

## Management

Despite the strength of the adrenergic triggers observed in both *CALM*-LQTS and *CALM*-CPVT, it is disappointing and rather surprising that anti-adrenergic strategies effectively used in conventional LQTS and CPVT ( $\beta$ -blocker therapy and LCSD) are inadequately protective for patients with calmodulinopathy.<sup>23</sup> Indeed,  $\beta$ -blocker therapy, the mainstay treatment for LQTS,<sup>40</sup> seems to offer modest benefit in controlling the life-threatening arrhythmias of calmodulinopathy. Mixed results were observed with the sodium channel blocker mexiletine, possibly because of a mutation-specific effect.<sup>41</sup> Ca<sup>2+</sup> channel blockade may seem a rational therapeutic strategy in *CALM*-LQTS given that impaired CDI of Ca<sub>v</sub>1.2 is a prominent underlying mechanism.<sup>33–35</sup> Unfortunately, at this time, the data available with verapamil are too limited to draw any conclusion.<sup>1,42</sup> As part of this largely negative picture, also LCSD, the other major pillar in LQTS<sup>40,43,44</sup> and CPVT<sup>45</sup> treatment, failed to prevent life-threatening arrhythmias in few *CALM*-LQTS patients.

Whether or not to implant an ICD in these young patients is a difficult decision, as exemplified by the following two cases. The decision not to implant an ICD in an asymptomatic infant, with a *CALM2* mutation and a QTc of 552 ms, resulted in his SCD due to documented VF at age of 20 months despite full dose  $\beta$ -blockade. In contrast, the decision to implant an ICD in a *CALM3* neonate contributed to his death due to device-related complications. These tragic examples highlight the urgent need to identify appropriate management strategies and therapies for life-threatening calmodulinopathies.<sup>35</sup>

Overall, it is difficult to provide more granular information on response to therapy because in most cases, given the lack of protection and the dramatic situations with these small children, one therapy was added or substituted to another in relatively rapid sequence which makes hazardous to provide an accurate and non-misleading

picture. Not infrequently, therapies followed by early recurrences were associated subsequently with a stabilization of the condition. This is why we regard as more correct to provide our overall sense of the therapeutic outcome as we have gathered from the detailed series of events in the individual cases. Indeed, the Registry data do not as yet allow the identification of a promising approach to an effective clinical management. What appear as legitimate conclusions are that: (i) monotherapy with  $\beta$ -blockers is usually insufficient; (ii) combination therapy with  $\beta$ -blockers, sodium channel blockers and LCSD may not be sufficient, particularly in *CALM*-LQTS with perinatal presentation; and (iii) ICDs are probably necessary in most patients but, in the very young ones, they represent a double-edged sword and the appropriate time for implantation should be carefully balanced considering symptoms and age. Only for truly desperate cases, cardiac transplantation could be considered as a last resort treatment option.<sup>46</sup>

## Limitations

All Registry data on rare and life-threatening conditions unavoidably suffer from the same limitation: namely, that despite careful and systematic collection of all possible information, the very nature of the individual management of these high risk children usually results in a series, even large, of anecdotal cases. This complicates the attempt to generalize the results, as it would be necessary and it is why we thought more correct to provide our gestalt view. More granular data, greater numbers, and longer follow-up will be necessary to define the efficacy of specific therapies or of their combination.

## Conclusion

This first report from the International Calmodulinopathy Registry provides novel information on the natural history and clinical presentation of these life threatening disorders. The presence of distinct genotype-phenotype correlations is beginning to emerge. As to the response to the conventional therapies used for LQTS and CPVT, the current data are not encouraging but a longer follow-up is necessary. The future inclusion in the Registry of many more cases will provide more insights and better guidance for the best management of these patients.

## Supplementary material

Supplementary material is available at *European Heart Journal* online.

## Acknowledgements

We wish to thank Drs Mette Nyegaard, Bettina Cuneo, and Kristina Haugaa for their collaboration and Pinuccia De Tomasi for expert editorial support. A special thanks to all the families represented in this Registry.

## Funding

Z.A.B. was funded by a grant (29283) from Swiss Heart Foundation C.R.B. and A.A.M.W. acknowledge the support from the Dutch Heart Foundation (CVON PREDICT project). L.C. acknowledge the support of 2017-ATE-0082 funding. The Registry has been partially funded by ERN GUARD-Heart. Partial funding for this work was provided by NIH grant

HL083374 (A.L.G., P.J.S., L.C.) and HL131914 (A.L.G.). D.J.T. and M.J.A. acknowledge the support from the Mayo Clinic Windland Smith Rice Comprehensive Sudden Cardiac Death Program. L.C. and P.J.S. acknowledge the support of the Leducq Foundation for Cardiovascular Research grant 18CVD05 "Towards Precision Medicine with Human iPSCs for Cardiac Channelopathies".

**Conflict of interest:** M.J.A. is a consultant for Audentes Therapeutics, Boston Scientific, Gilead Sciences, Invitae, Medtronic, MyoKardia, and St. Jude Medical. M.J.A. and Mayo Clinic have an equity/royalty relationship (without remuneration so far) with AliveCor, Blue Ox Health Corporation, and StemoniX. M.V. receives salary/stock from Invitae Corporation. H.H.O. have received salary from Abbott and have research partnership with Medtronic. However, none of the disclosures pertain directly to this paper and none of the companies provided financial support for this study. All other authors declared no conflict of interest.

## References

- Crotti L, Johnson CN, Graf E, De Ferrari GM, Cuneo BF, Ovadia M, Papagiannis J, Feldkamp MD, Rathi SG, Kunic JD, Pedrazzini M, Wieland T, Lichtner P, Beckmann BM, Clark T, Shaffer C, Benson DW, Käb S, Meitinger T, Strom TM, Chazin WJ, Schwartz PJ, George AL. Calmodulin mutations associated with recurrent cardiac arrest in infants. *Circulation* 2013;**127**:1009–1017.
- Nyegaard M, Overgaard MT, Søndergaard MT, Vranas M, Behr ER, Hildebrandt LL, Lund J, Hedley PL, Camm AJ, Wettrell G, Fosdal I, Christiansen M, Børglum AD. Mutations in calmodulin cause ventricular tachycardia and sudden cardiac death. *Am J Hum Genet* 2012;**91**:703–712.
- Marsman RF, Barc J, Beekman L, Alders M, Dooijes D, Van Den Wijngaard A, Ratbi I, Sefiani A, Bhuiyan ZA, Wilde AAM, Bezzina CR. A mutation in CALM1 encoding calmodulin in familial idiopathic ventricular fibrillation in childhood and adolescence. *J Am Coll Cardiol* 2014;**63**:259–266.
- Makita N, Yagihara N, Crotti L, Johnson CN, Beckmann B-M, Roh MS, Shigemizu D, Lichtner P, Ishikawa T, Aiba T, Homfray T, Behr ER, Klug D, Denjoy I, Mastantuono E, Theisen D, Tsunoda T, Satake W, Toda T, Nakagawa H, Tsuji Y, Tsuchiya T, Yamamoto H, Miyamoto Y, Endo N, Kimura A, Ozaki K, Motomura H, Suda K, Tanaka T, Schwartz PJ, Meitinger T, Käb S, Guicheney P, Shimizu W, Bhuiyan ZA, Watanabe H, Chazin WJ, George AL. Novel calmodulin mutations associated with congenital arrhythmia susceptibility. *Circ Cardiovasc Genet* 2014;**7**:466–474.
- Reed GJ, Boczek NJ, Etheridge SP, Ackerman MJ. CALM3 mutation associated with long QT syndrome. *Heart Rhythm* 2015;**12**:419–422.
- Pipilas DC, Johnson CN, Webster G, Schlaepfer J, Fellmann F, Sekarski N, Wren LM, Ogorodnik KV, Chazin DM, Chazin WJ, Crotti L, Bhuiyan ZA, George AL. Novel calmodulin mutations associated with congenital long QT syndrome affect calcium current in human cardiomyocytes. *Heart Rhythm* 2016;**13**:2012–2019.
- Chaix MA, Koopmann TT, Goyette P, Alikashani A, Latour F, Fatah M, Hamilton RM, Rioux JD. Novel CALM3 mutations in pediatric long QT syndrome patients support a CALM3-specific calmodulinopathy. *Hear Case Reports* 2016;**2**:250–254.
- Boczek NJ, Gomez-Hurtado N, Ye D, Calvert ML, Tester DJ, Kryshtal DO, Hwang HS, Johnson CN, Chazin WJ, Loporcaro CG, Shah M, Papez AL, Lau YR, Kanter R, Knollmann BC, Ackerman MJ. Spectrum and prevalence of CALM1-, CALM2-, and CALM3-encoded calmodulin variants in long QT syndrome and functional characterization of a novel long QT syndrome-associated calmodulin missense variant, E141G. *Circ Cardiovasc Genet* 2016;**9**:136–146.
- Anderson JH, Tester DJ, Will ML, Ackerman MJ. Whole-exome molecular autopsy after exertion-related sudden unexplained death in the young. *Circ Cardiovasc Genet* 2016;**9**:259–265.
- Gomez-Hurtado N, Boczek NJ, Kryshtal DO, Johnson CN, Sun J, Nitu FR, Cornea RL, Chazin WJ, Calvert ML, Tester DJ, Ackerman MJ, Knollmann BC. Novel CPVT-associated calmodulin mutation in CALM3 (CALM3-A103V) activates arrhythmogenic Ca waves and sparks. *Circ Arrhythmia Electrophysiol* 2016;**9**:e004161.
- Jiménez-Jáimez J, Doza JP, Ortega Á, Macías-Ruiz R, Perin F, Rodríguez-Vázquez Del Rey MM, Ortiz-Genga M, Monserrat L, Barriales-Villa R, Blanca E, Álvarez M, Tercedor L. Calmodulin 2 mutation N98S is associated with unexplained cardiac arrest in infants due to low clinical penetrance electrical disorders. *PLoS One* 2016;**11**:1–10.
- Takahashi K, Ishikawa T, Makita N, Takefuta K, Nabeshima T, Nakayashiro M. A novel de novo calmodulin mutation in a 6-year-old boy who experienced an aborted cardiac arrest. *HeartRhythm Case Rep* 2017;**3**:69–72.
- Daly A, Johnson NM, Decker E, Callis TE, Tahiliani J, Garcia J, Aguilar S, Murillo L, Herrera B, Beltran D, Harte R, Dunn K, Dubin AM, Ceresnak SR, Priest J, Motonaga KS, Vatta M. Pathogenic variants in calmodulin associated with resuscitated childhood cardiac arrest (Abstract C-AB01-05.). *Heart Rhythm* 2017;**14**:S2.
- George AL. Calmodulinopathy: a genetic trilogy. *Heart Rhythm* 2015;**12**:423–424.
- Schwartz PJ. The idiopathic long QT syndrome: the need for a prospective registry. *Eur Heart J* 1983;**4**:529–531.
- Moss AJ, Schwartz PJ, Crampton RS, Locati E, Carleen E. The long QT syndrome: a prospective international study. *Circulation* 1985;**71**:17–21.
- Moss AJ, Schwartz PJ. 25th Anniversary of the International Long-QT Syndrome Registry: an ongoing quest to uncover the secrets of long-QT syndrome. *Circulation* 2005;**111**:1199–1201.
- den Dunnen J, Dalgleish R, Maglott D, Hart R, Greenblatt M, McGowan J, Roux A, Smith T, Antonarakis S, Taschner P. HGVS recommendations for the description of sequence variants: 2016 update. *Hum Mutat* 2016;**37**:564–569.
- Richards S, Aziz N, Bale S, Bick D, Das S, Gastier-Foster J, Grody WW, Hegde M, Lyon E, Spector E, Voelkerding K, Rehms H, Committee A. Standards and guidelines for the interpretation of sequence variants: a joint consensus recommendation of the American College of Medical Genetics and Genomics and the Association for Molecular Pathology. *Genet Med* 2015;**17**:405–424.
- Consortium 1000 Genomes Project, Auton A, Brooks L, Durbin R, Garrison E, Kang H, Korbel J, Marchini J, McCarthy S, McVean G, Abecasis G. A global reference for human genetic variation. *Nature* 2015;**526**:68–74.
- Exome Variant Server, NHLBI GO Exome Sequencing Project (ESP), Seattle, WA. <http://evs.gs.washington.edu/EVS/> (April 2018).
- Lek M, Karczewski KJ, Minikel EV, Samocha KE, Banks E, Fennell T, O'Donnell-Luria AH, Ware JS, Hill AJ, Cummings BB, Tukiainen T, Birnbaum DP, Kosmicki JA, Duncan LE, Estrada K, Zhao F, Zou J, Pierce-Hoffman E, Berghout J, Cooper DN, DeFlaux N, DePristo M, Do R, Flannick J, Fromer M, Gauthier L, Goldstein J, Gupta N, Howrigan D, Kiezun A, Kurki MI, Moonshine AL, Natarajan P, Orozco L, Peloso GM, Poplin R, Rivas MA, Ruano-Rubio V, Rose SA, Ruderfer DM, Shakir K, Stenson PD, Stevens C, Thomas BP, Tiao G, Tusie-Luna MT, Weisburd B, Won H-H, Yu D, Altshuler DM, Ardissino D, Boehnke M, Danesh J, Donnelly S, Elosua R, Florez JC, Gabriel SB, Getz G, Glatt SJ, Hultman CM, Kathiresan S, Laakso M, McCarrroll S, McCarthy MI, McGovern D, McPherson R, Neale BM, Palotie A, Purcell SM, Saleheen D, Scharf JM, Sklar P, Sullivan PF, Tuomilehto J, Tsuang MT, Watkins HC, Wilson JG, Daly MJ, MacArthur DG. Analysis of protein-coding genetic variation in 60,706 humans. *Nature* 2016;**536**:285–291.
- Priori SG, Wilde AA, Horie M, Cho Y, Behr ER, Berul C, Blom N, Brugada J, Chiang C-E, Huikuri H, Kannankeril P, Krahn A, Leenhardt A, Moss A, Schwartz PJ, Shimizu W, Tomaselli G, Tracy C, Document Reviewers, Ackerman M, Belhassen B, Estes NAM, Fatkin D, Kalman J, Kaufman E, Kirchhof P, Schulze-Bahr E, Wolpert C, Vohra J, Refaat M, Etheridge SP, Campbell RM, Martin ET, Quek SC; Heart Rhythm Society; European Heart Rhythm Association; Asia Pacific Heart Rhythm Society. Executive summary: HRS/EHRA/APHS expert consensus statement on the diagnosis and management of patients with inherited primary arrhythmia syndromes. *Europace* 2013;**15**:1389–1406.
- Priori SG, Wilde AA, Horie M, Cho Y, Behr ER, Berul C, Blom N, Brugada J, Chiang C-E, Huikuri H, Kannankeril P, Krahn A, Leenhardt A, Moss A, Schwartz PJ, Shimizu W, Tomaselli G, Tracy C. Executive summary: HRS/EHRA/APHS expert consensus statement on the diagnosis and management of patients with inherited primary arrhythmia syndromes. *Heart Rhythm* 2013;**10**:e85–108.
- Schwartz PJ, Priori SG, Locati EH, Napolitano C, Cantù F, Towbin JA, Keating MT, Hammoude H, Brown AM, Chen LS, Colatsky TJ. Long QT syndrome patients with mutations of the SCN5A and HERG genes have differential responses to Na<sup>+</sup> channel blockade and to increases in heart rate. Implications for gene-specific therapy. *Circulation* 1995;**92**:3381–3386.
- Zhang L, Benson DW, Tristani-Firouzi M, Ptacek LJ, Tawil R, Schwartz PJ, George AL, Horie M, Andelfinger G, Snow GL, Fu YH, Ackerman MJ, Vincent GM. Electrocardiographic features in Andersen-Tawil syndrome patients with KCNJ2 mutations: characteristic T-U-wave patterns predict the KCNJ2 genotype. *Circulation* 2005;**111**:2720–2726.
- Ben-Johny M, Dick IE, Sang L, Limpitkul WB, Kang PW, Niu J, Banerjee R, Yang W, Babich JS, Issa JB, Lee SR, Namkung H, Li J, Zhang M, Yang PS, Bazzazi H, Adams PJ, Joshi-Mukherjee R, Yue DN, Yue DT. Towards a unified theory of calmodulin regulation (calmodulation) of voltage-gated calcium and sodium channels. *Curr Mol Pharmacol* 2015;**8**:188–205.
- Halling DB, Liebeskind BJ, Hall AW, Aldrich RW. Conserved properties of individual Ca<sup>2+</sup>-binding sites in calmodulin. *Proc Natl Acad Sci USA* 2016;**113**:E1216–E1225.
- Splawski I, Timothy KW, Sharpe LM, Decher N, Kumar P, Bloise R, Napolitano C, Schwartz PJ, Joseph RM, Condouris K, Tager-Flusberg H, Priori SG, Sanguinetti MC, Keating MT. Ca(V)<sub>1.2</sub> calcium channel dysfunction causes a multisystem disorder including arrhythmia and autism. *Cell* 2004;**119**:19–31.

30. Dufendach KA, Timothy K, Ackerman MJ, Blevins B, Pflaumer A, Etheridge S, Perry J, Blom NA, Temple J, Chowdhury D, Skinner JR, Johnsrude C, Bratincsak A, Bos JM, Shah M. Clinical outcomes and modes of death in Timothy syndrome: a multicenter international study of a rare disorder. *JACC Clin Electrophysiol* 2018;**4**:459–466.
31. Triedman JK, Newburger JW. Trends in congenital heart disease: the next decade. *Circulation* 2016;**133**:2716–2733.
32. Yin G, Hassan F, Haroun AR, Murphy LL, Crotti L, Schwartz PJ, George AL, Satin J. Arrhythmogenic calmodulin mutations disrupt intracellular cardiomyocyte Ca<sup>2+</sup> regulation by distinct mechanisms. *J Am Heart Assoc* 2014;**3**:1–15.
33. Rocchetti M, Sala L, Dreizehnter L, Crotti L, Sinnecker D, Mura M, Pane LS, Altomare C, Torre E, Mostacciuolo G, Severi S, Porta A, De Ferrari GM, George AL, Schwartz PJ, Gneccchi M, Moretti A, Zaza A. Elucidating arrhythmogenic mechanisms of long-QT syndrome CALM1-F142L mutation in patient-specific induced pluripotent stem cell-derived cardiomyocytes. *Cardiovasc Res* 2017;**113**: 531–541.
34. Yamamoto Y, Makiyama T, Harita T, Sasaki K, Wuriyanghai Y, Hayano M, Nishiuchi S, Kohjitani H, Hirose S, Chen J, Yokoi F, Ishikawa T, Ohno S, Chonabayashi K, Motomura H, Yoshida Y, Horie M, Makita N, Kimura T. Allele-specific ablation rescues electrophysiological abnormalities in a human iPSC cell model of long-QT syndrome with a CALM2 mutation. *Hum Mol Genet* 2017;**26**: 1670–1677.
35. Limpitkul WB, Dick IE, Tester DJ, Boczek NJ, Limphong P, Yang W, Choi MH, Babich J, DiSilvestre D, Kanter RJ, Tomaselli GF, Ackerman MJ, Yue DT. A precision medicine approach to the rescue of function on malignant calmodulinopathic long-QT syndrome. *Circ Res* 2017;**120**:39–48.
36. Hwang HS, Nitu FR, Yang Y, Walweel K, Pereira L, Johnson CN, Faggioni M, Chazin WJ, Laver D, George AL, Cornea RL, Bers DM, Knollmann BC. Divergent regulation of ryanodine receptor 2 calcium release channels by arrhythmogenic human calmodulin missense mutants. *Circ Res* 2014;**114**: 1114–1124.
37. Limpitkul WB, Dick IE, Joshi-Mukherjee R, Overgaard MT, George AL, Yue DT. Calmodulin mutations associated with long QT syndrome prevent inactivation of cardiac L-type Ca<sup>2+</sup> currents and promote proarrhythmic behavior in ventricular myocytes. *J Mol Cell Cardiol* 2014;**74**:115–124.
38. Kotta M-C, Sala L, Ghidoni A, Badone B, Ronchi C, Parati G, Zaza A, Crotti L. Calmodulinopathy: a novel, life-threatening clinical entity affecting the young. *Front Cardiovasc Med* 2018;**5**:175.
39. Badone B, Ronchi C, Kotta M-C, Sala L, Ghidoni A, Crotti L, Zaza A. Calmodulinopathy: functional effects of CALM mutations and their relationship with clinical phenotypes. *Front Cardiovasc Med* 2018;**5**:1–13.
40. Schwartz PJ, Ackerman MJ. The long QT syndrome: a transatlantic clinical approach to diagnosis and therapy. *Eur Heart J* 2013;**34**:3109–3116.
41. Schwartz PJ, Sala L. Precision versus traditional medicine-clinical questions trigger progress in basic science. *Circ Res* 2019;**124**:459–461.
42. Webster G, Schoppen ZJ, George AL. Treatment of calmodulinopathy with verapamil. *BMJ Case Rep* 2017;**2017**:bcr-2017-220568.
43. Schwartz PJ, Priori SG, Cerrone M, Spazzolini C, Otero A, Napolitano C, Bloise R, De Ferrari GM, Klersy C, Moss AJ, Zareba W, Robinson JL, Hall WJ, Brink PA, Toivonen L, Epstein AE, Li C, Hu D. Left cardiac sympathetic denervation in the management of high-risk patients affected by the long-QT syndrome. *Circulation* 2004;**109**:1826–1833.
44. Collura CA, Johnson JN, Moir C, Ackerman MJ. Left cardiac sympathetic denervation for the treatment of long QT syndrome and catecholaminergic polymorphic ventricular tachycardia using video-assisted thoracic surgery. *Heart Rhythm* 2009;**6**:752–759.
45. De Ferrari GM, Dusi V, Spazzolini C, Bos JM, Abrams DJ, Berul CI, Crotti L, Davis AM, Eldar M, Kharlap M, Khoury A, Krahn AD, Leenhardt A, Moir CR, Otero A, Olde Nordkamp L, Paul T, Rosés I, Nogueira F, Shkolnikova M, Till J, Wilde AAM, Ackerman MJ, Schwartz PJ. Clinical management of catecholaminergic polymorphic ventricular tachycardia: the role of left cardiac sympathetic denervation. *Circulation* 2015;**131**:2185–2193.
46. Kelle AM, Bos JM, Etheridge SP, Cannon BC, Bryant RM, Johnson JN, Ackerman MJ. Cardiac transplantation in children and adolescents with long QT syndrome. *Heart Rhythm* 2017;**14**:1182–1188.